

Case Study - Flat Panels and Projection Combination



Canon Showroom

Challenge

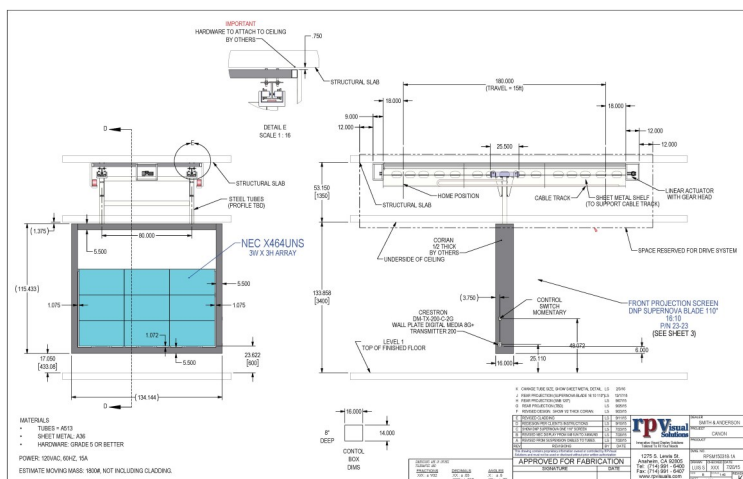
The Canon team wanted to create a meeting space that could support large gatherings in addition to small one-on-one meetings by incorporating a movable flat panel wall to span across the room. rp Visual Solutions (RPV) worked with AV Consultant, Smith + Andersen, and AV Integrator, Applied Electronics, to design and fabricate a solution for an architecturally integrated video wall, mounted on a motorized track system, for the showroom space.

Quick Facts

Location: Brampton, ON Canada

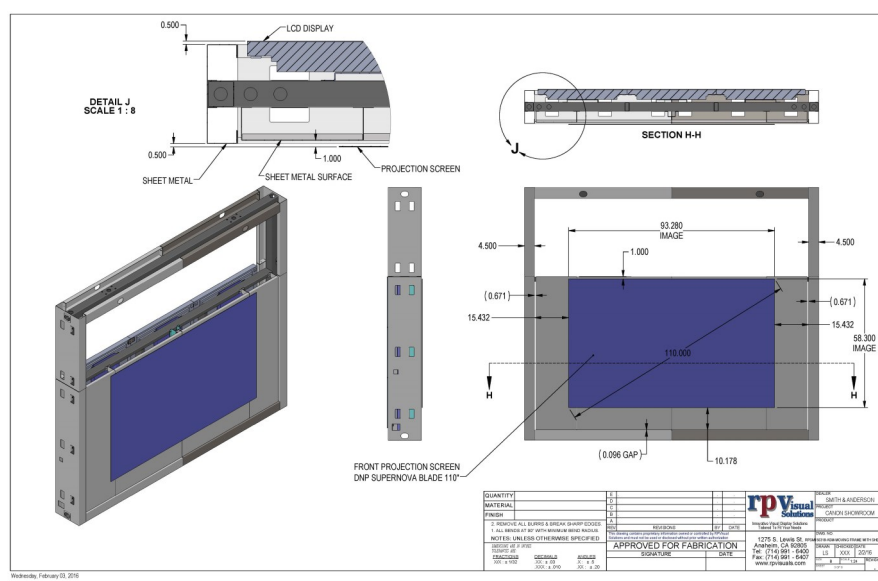
Challenge: Movable Dual-Sided Flat Panel and Projection Display

Solution: Flat Panel Matrix Mount with dnp Supernova Blade



Solutions

RPV designed, engineered, and fabricated a custom suspended, motorized track system supporting a dual sided display with a 3x3, 46" NEC flat panel array. The other side is dnp's Ambient Light Rejecting (ALR) Supernova Blade screen.



The 3x3 custom flat panel array is engineered with available service access to support the NEC panels. Suspended from the ceiling, the mount moves along a track 15 feet in length allowing Canon to reconfigure the space based on both audience size and content being presented. The custom engineered mount allows a tight seam tolerance between the NEC panels and minimal outer clearance creating a clean, architecturally integrated display.

In order to add a second display without increasing the thickness of the structure and also maintain contrast in a brightly lit room, RPV provided a dnp Supernova Blade, an optically structured Ambient Light Rejecting (ALR) screen. Supernova's microscopic structure creates up to 7 times the contrast compared to standard diffusion front projection screen. The Blade is the only frameless ALR screen allowing a tech savvy aesthetic while maintaining a total thickness of 3mm.

Project Partners with rp Visuals

AV Consultant: Smith + Andersen

AV Integrator: Applied Electronics

Panel Manufacturer: NEC

Projection Screen Manufacturer: dnp

About rp Visual Solutions

From rendering to reality, RPV specializes in the design, engineering, fabrication, testing, and installation of creative visual structures for digital signage across a variety of verticals. RPV offers architecturally integrated mounting solutions requiring engineering excellence and knowledge to deliver the best visual experiences. RPV is known for the very best in display optimization, installation, and maintainability.

