

NYPD PSAC

Technology for 911 Operations Center

Quick Facts

Facility: NYPD Public Safety Answering Center

Location: New York, NY

Challenge: Tilted Support Frame for MicroTile video walls

Solution: Custom rp Visual Solutions Mounting Solution

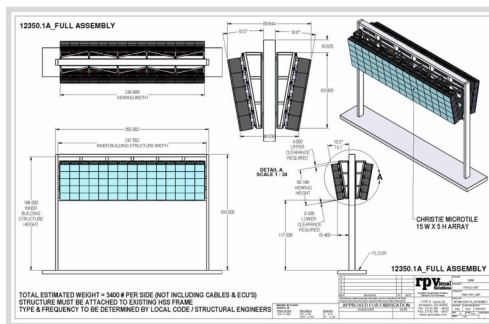
Install Date: November 2015

Fun facts: 225 MicroTiles used in a 10° downward tilt

Challenge

After the 9/11 attacks Mayor Bloomberg of New York City decided the 911 System needed a technology overhaul. Rp Visual Solutions (RPV) partnered with local consultant -Shen, Milsom & Wilke to design several video walls for this project. When critical decision making requires swift responses you need a video wall that performs efficiently, without worrying about the dependability of its technology. The floor support frames designed for these video walls allows the NYPD staff to collaborate and aid with critical decision making in emergency situations. The high-resolution MicroTiles from Christie Digital make the display viewable from virtually anywhere within the facility.

RPV designed, engineered, and installed four (4) large video walls that comprised of 15 high by 5 wide Christie MicroTile arrays each. These support frames used RPV's custom 6-axis mounting brackets to assure precision alignment of the MicroTiles, and allow for six points of adjustability. These steel support frames were also engineered to accommodate a 10° downward tilt needed for optimal viewing angles.



About rp Visual Solutions (RPV)

From rendering to reality, RPV specializes in the design, engineering, fabrication, testing, and installation of creative visual structures for digital signage across a variety of verticals. RPV offers architecturally integrated mounting solutions requiring engineering excellence and knowledge to deliver the best visual experiences. RPV is known for the very best in display optimization, installation, and maintainability.

