

UPENN

Researching Safer Medicines via Technology

Quick Facts

Facility: UPENN Institute for Translational Medicine & Therapeutics

Location: Philadelphia, PA

Challenge: Wall Mounted Frame for MicroTile video wall

Solution: Custom rp Visual Solutions Mounting Solution

Install Date: April 2011

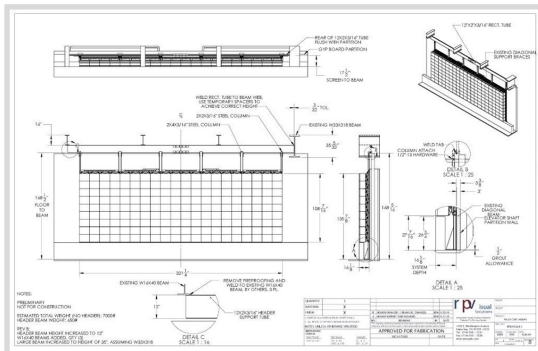
Fun facts: 180 MicroTiles used

Challenge

What's the best solution to keep students informed? Digital Signage of course! Cerami & Associates partnered with rp Visual Solutions (RPV) to design and engineer a video wall for this prestigious School of Medical project. When a school focuses on researching safer medicines, it needs to foster interaction among it's students and staff for higher education collaborations.

The wall mounted backer frames were designed content rich student messaging. The high-resolution MicroTiles

from Christie Digital make the display viewable from virtually anywhere within the facility. RPV designed, engineered, and installed the large video wall that comprised of 9 high by 20 wide Christie MicroTile array. This frame used RPV's custom 6-axis mounting brackets to assure precision alignment of the Micro-Tiles, and allow for six points of adjustability.



About rp Visual Solutions (RPV)

From rendering to reality, RPV specializes in the design, engineering, fabrication, testing, and installation of creative visual structures for digital signage across a variety of verticals. RPV offers architecturally integrated mounting solutions requiring engineering excellence and knowledge to deliver the best visual experiences. RPV is known for the very best in display optimization, installation, and maintainability.

