

This drawing contains proprietary information owned or controlled by RPVisual Solutions and must not be used or disclosed without prior written authorization

DIMENSIONS ARE IN INCHES
TOLERANCES ARE:
FRACTIONS: X/X : ± 1/32
DECIMALS: .XX : ± .03
 .XXX : ± .010
ANGLES: X : ± .5
 .XX : ± .20

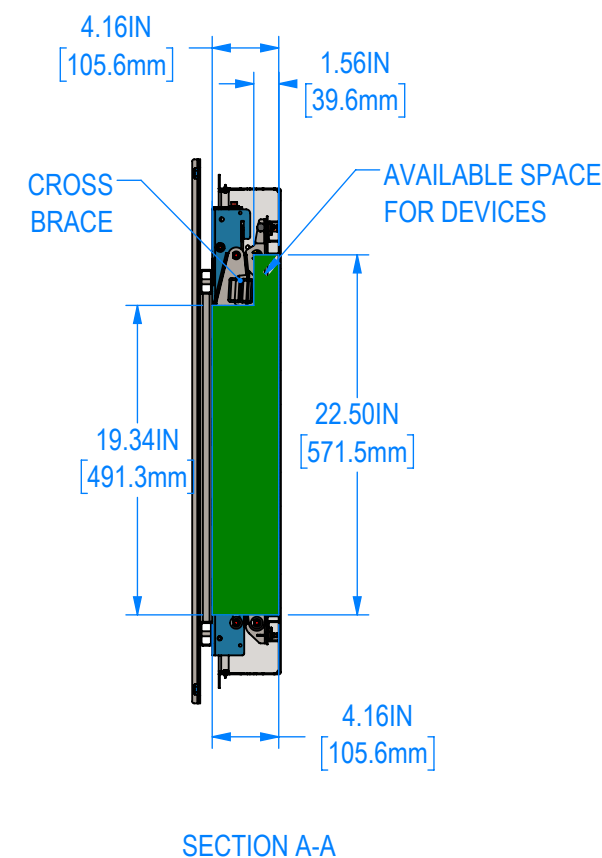
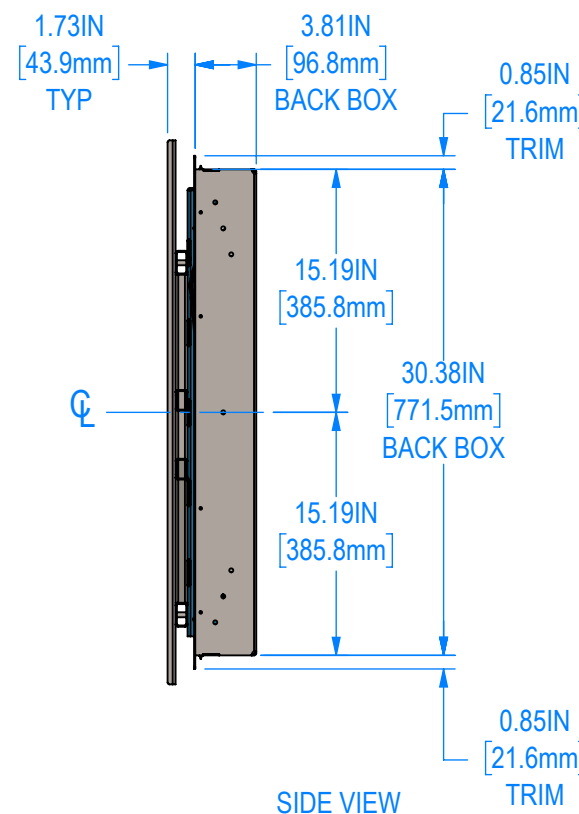
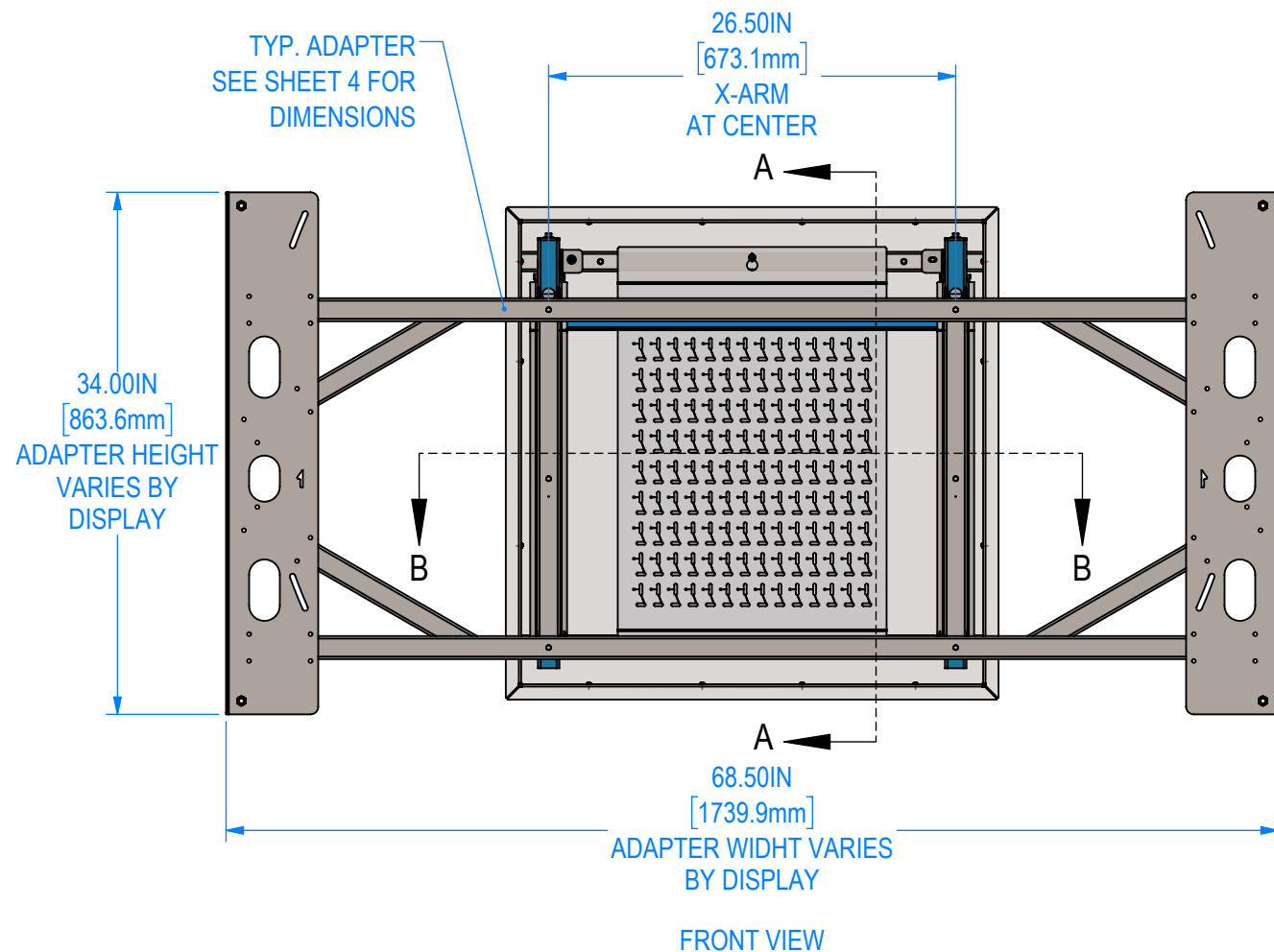
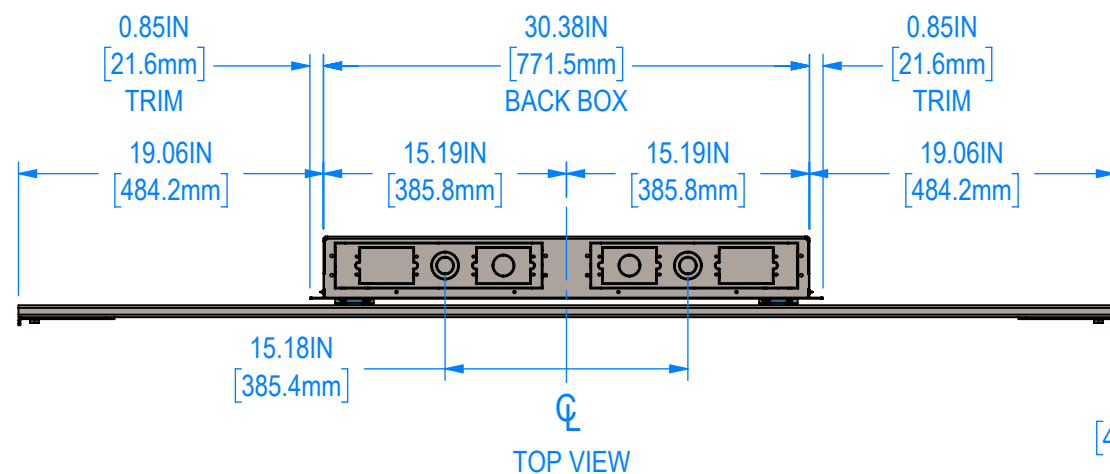
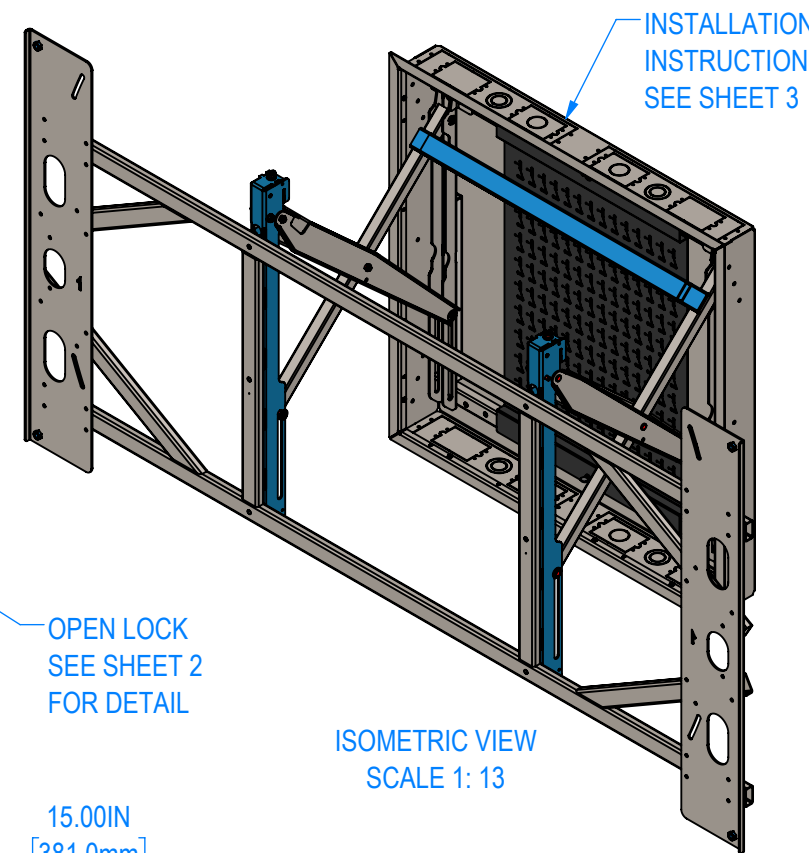
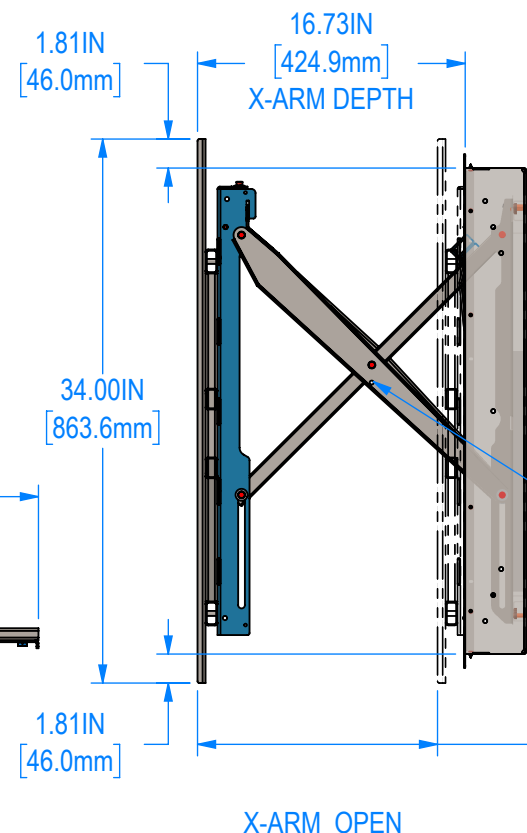
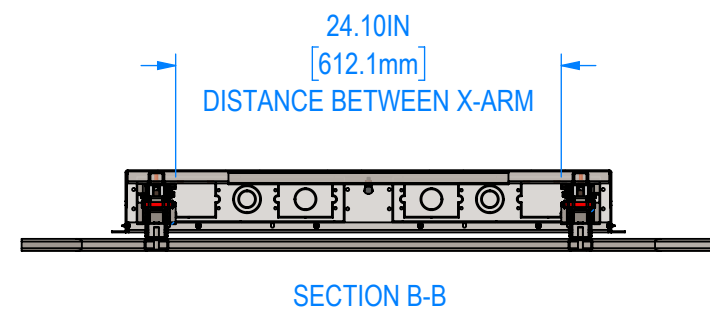
APPROVED FOR FABRICATION

SIGNATURE: _____

DATE: _____

NOTES:

1. FINISH: SEMI-GLOSS BLACK POWDER COAT
2. APPROXIMATE WEIGHT: 121.38 LBS



G			
F			
E			
C			
B			
A			
REV:	DESCRIPTION:	BY:	DATE:
DEALER:			

PROJECT: _____

SKU: RPWM-32MAXB6-XMR-OFFSET

PART NO: 00072-00101-00

DESCRIPTION: LARGE FLAT DISPLAY
OFFSET PLATE - PULL OUT
WALLMATE 32MAXB6 KIT

SIZE: B DATE: 9/25/2023 DRAWN: GS CHECKED: XXX

DWG. ID: RPWM-32MAXB6-XMR-OFFSET.1

JOB NO: _____ SCALE: 1:12 SHEET: 1 OF 4 REVISION: _____

This drawing contains proprietary information owned or controlled by RPVisual Solutions and must not be used or disclosed without prior written authorization

DIMENSIONS ARE IN INCHES
TOLERANCES ARE:
FRACTIONS DECIMALS ANGLES
X/X : ± 1/32 .XX : ± .03 .X : ± .5
.XXX : ± .010 .XX : ± .20

APPROVED FOR FABRICATION

SIGNATURE:

DATE:

NOTES:

G			
F			
E			
C			
B			
A			

REV: DESCRIPTION: BY: DATE:

DEALER:

PROJECT:

SKU: RPWM-32MAXB6-XMR-OFFSET

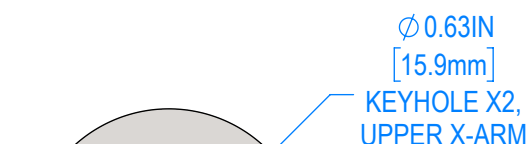
PART NO: 00072-00101-00

DESCRIPTION: LARGE FLAT DISPLAY
OFFSET PLATE - PULL OUT
WALLMATE 32MAXB6 KIT

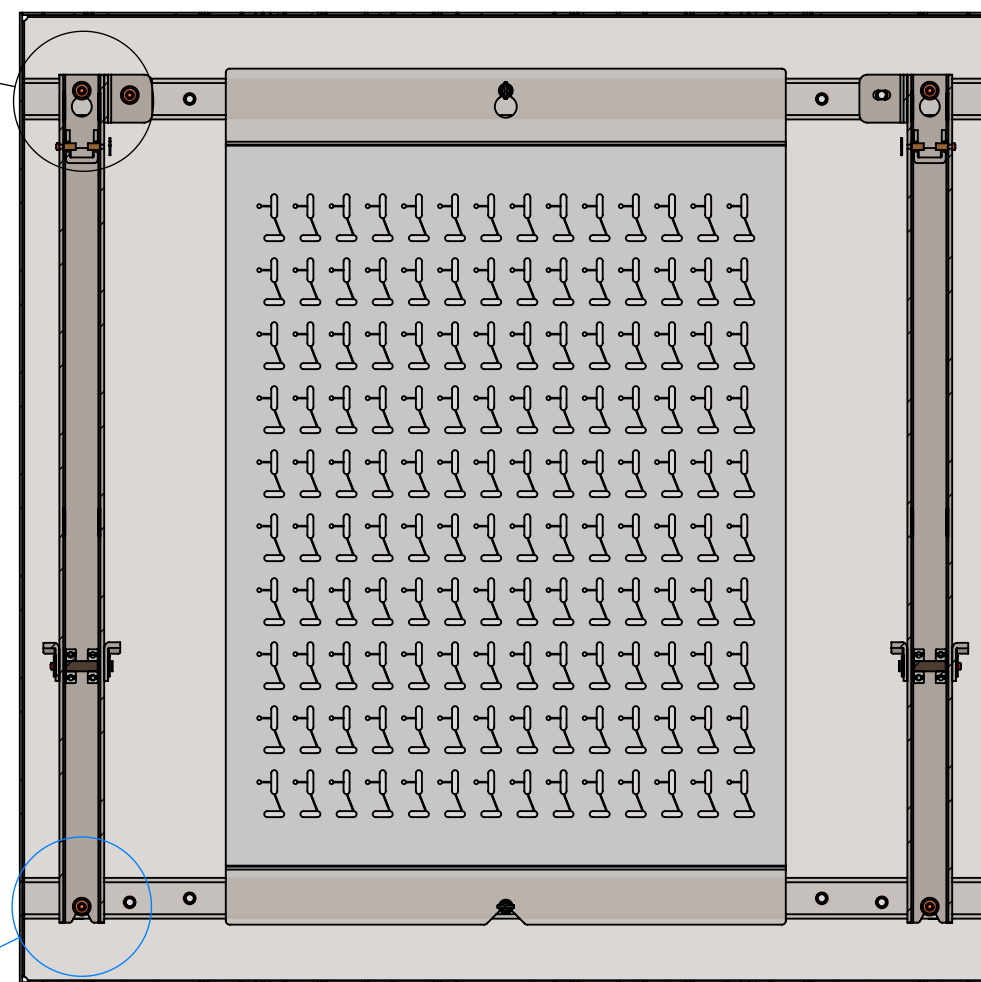
SIZE: B DATE: 9/25/2023 DRAWN: GS CHECKED: XXX

DWG. ID: RPWM-32MAXB6-XMR-OFFSET.2

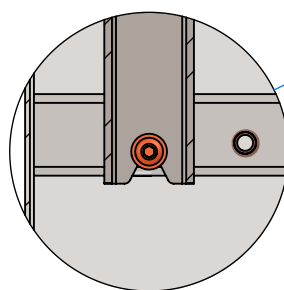
JOB NO: SCALE: 1:6 REVISION:
SHEET: 2 OF 4



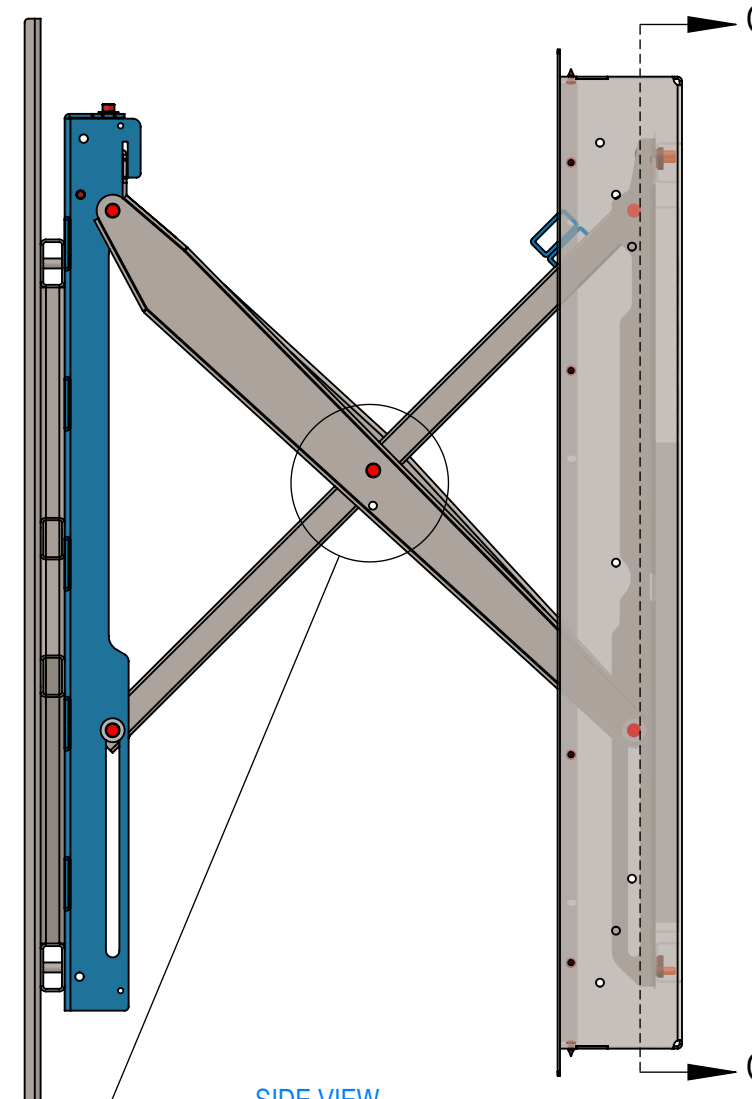
DETAIL D
SCALE 1 : 3



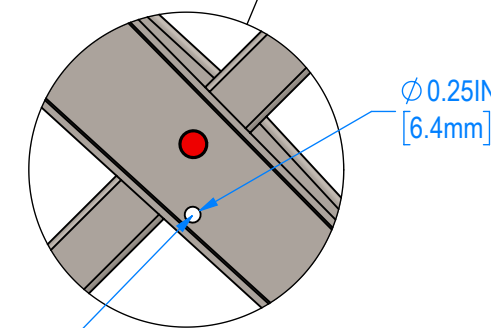
SECTION C-C



DETAIL E
SCALE 1 : 3



SIDE VIEW
OPEN POSITION



DETAIL F
SCALE 1 : 3

USE THIS LOCATION
TO LOCK X-ARM
IN OPEN POSITION

This drawing contains proprietary information owned or controlled by RPVisual Solutions and must not be used or disclosed without prior written authorization

DIMENSIONS ARE IN INCHES
TOLERANCES ARE:

FRACTIONS	DECIMALS	ANGLES
X/X : ± 1/32	.XX : ± .03 .XXX : ± .010	.X : ± .5 .XX : ± .20

APPROVED FOR FABRICATION

SIGNATURE: _____

DATE: _____

NOTES:

1. FINISH: SEMI-GLOSS BLACK POWDER COAT
2. APPROXIMATE WEIGHT: 121.38 LBS

WALLMATE 32MAXB6
BACK BOX KIT
SKU: RPWM-32MAXB6-BOX-KIT
WEIGHT: 43.83 LBS

PERIPHERAL PLATE FOR
WALLMATE 32MAXB6
SKU: RPWM-32MAXB6-PM
WEIGHT: 7.74 LBS

BACK BOX 32MAXB6 WELDMENT
WEIGHT: 32.04 LBS

IMPORTANT

- LEVEL AND PLUMB WALLMATE BOX

IMPORTANT

- USE ALL SEVEN MOUNTING POINTS PER SIDE
- TYPE OF FESTENER SPECIFIED AND PROVIDED BY OTHERS

KEYWAYS AND SLOTS
ATTACH ADAPTER HERE

BEZEL TRIM 32MAXB KIT
SKU: RPWM-32MAXB-BZL
WEIGHT: 3.88 LBS

USE #8 X 3/8"
SHEET METAL SCREWS
X32

HEAVY DUTY ROLLER X-ARM
FOR WALLMATE 32MAXB
SKU: RPWM-32MAXB6-XMR
WEIGHT: 41.52 LBS

1/4-20 X 3/4"
FLANGED BUTTON
HEAD SCREW
X6

5/16-18 FLANGED
LOCKNUT
X6

TYP. OFFSET PLATE FOR
WALLMATE 32MAXB6
SKU: RPWM-32MAXB6-OFFSET
SEE SHEET 4 FOR
DIMENSIONS
WEIGHT: 36.01 LBS

FRONT ISO VIEW
(EXPLODED)

INSTALLATION NOTES:

1. WALLMATE RPWM-32MAXB6-XMR CAN HOLD 820 LBS OF WEIGHT FOR DISPLAY AND ADAPTER
2. CANNOT MOUNT INTO TYPICAL WALL BUILDS
3. VERIFY WALL STRENGTH WITH STRUCTURAL ENGINEER. (COG DRAWINGS AVAILABLE UPON REQUEST.)
4. CAN MOUNT TO OPTIONAL STEEL POSTS BY RPV (CALL FOR DETAILS)
5. USE ALL FASTENING POINTS ON BOTH SIDES OF BOX

G			
F			
E			
C			
B			
A			

REV:	DESCRIPTION:	BY:	DATE:
DEALER:			

PROJECT: _____

SKU: RPWM-32MAXB6-XMR-OFFSET

PART NO: 00072-00101-00

DESCRIPTION: LARGE FLAT DISPLAY
OFFSET PLATE - PULL OUT
WALLMATE 32MAXB6 KIT

SIZE: B	DATE: 9/25/2023	DRAWN: GS	CHECKED: XXX
---------	-----------------	-----------	--------------

DWG. ID: RPWM-32MAXB6-XMR-OFFSET.3

JOB NO:	SCALE: 1:9	REVISION:
	SHEET: 3 OF 4	

NOTE TO CONTRACTOR:
 USE SUPPLIED HARDWARE WITH CAUTION:
 - SCREWS CAN EXCEED DISPLAY INSERT LENGTH
 - VERIFY INSERT LENGTH WITH DISPLAY
 MANUFACTURER PRIOR TO USE

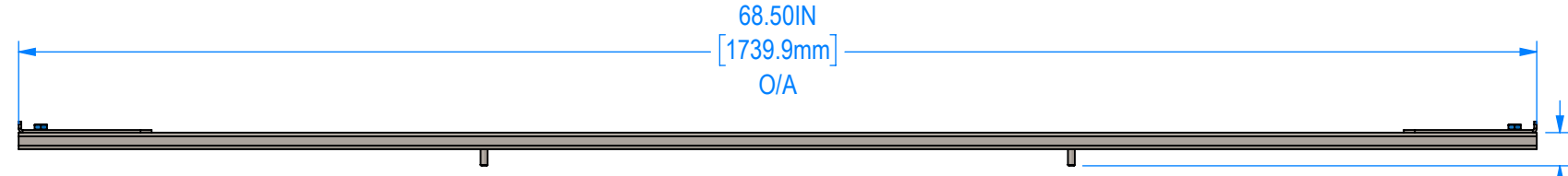
DISPLAY MOUNTING HARDWARE PROVIDED BY RPV:
 QTY: 4 / UNIT - M6 X 16mm FLANGED SBHCS ALLOY
 QTY: 4 / UNIT - M8 X 16mm, M8 X 20mm FLANGED SBHCS ALLOY
 QTY: 4 / UNIT - M8 X 40mm SBHCS ALLOY
 QTY: 4 / UNIT - 5/16" ID X 3/4" OD FLAT WASHER

This drawing contains proprietary information owned or controlled by RPVisual Solutions and must not be used or disclosed without prior written authorization.
 DIMENSIONS ARE IN INCHES
 TOLERANCES ARE:
 FRACTIONS: X/X : ± 1/32
 DECIMALS: .XX : ± .03
 .XXX : ± .010
 ANGLES: X : ± .5
 .XX : ± .20

APPROVED FOR FABRICATION
 SIGNATURE:

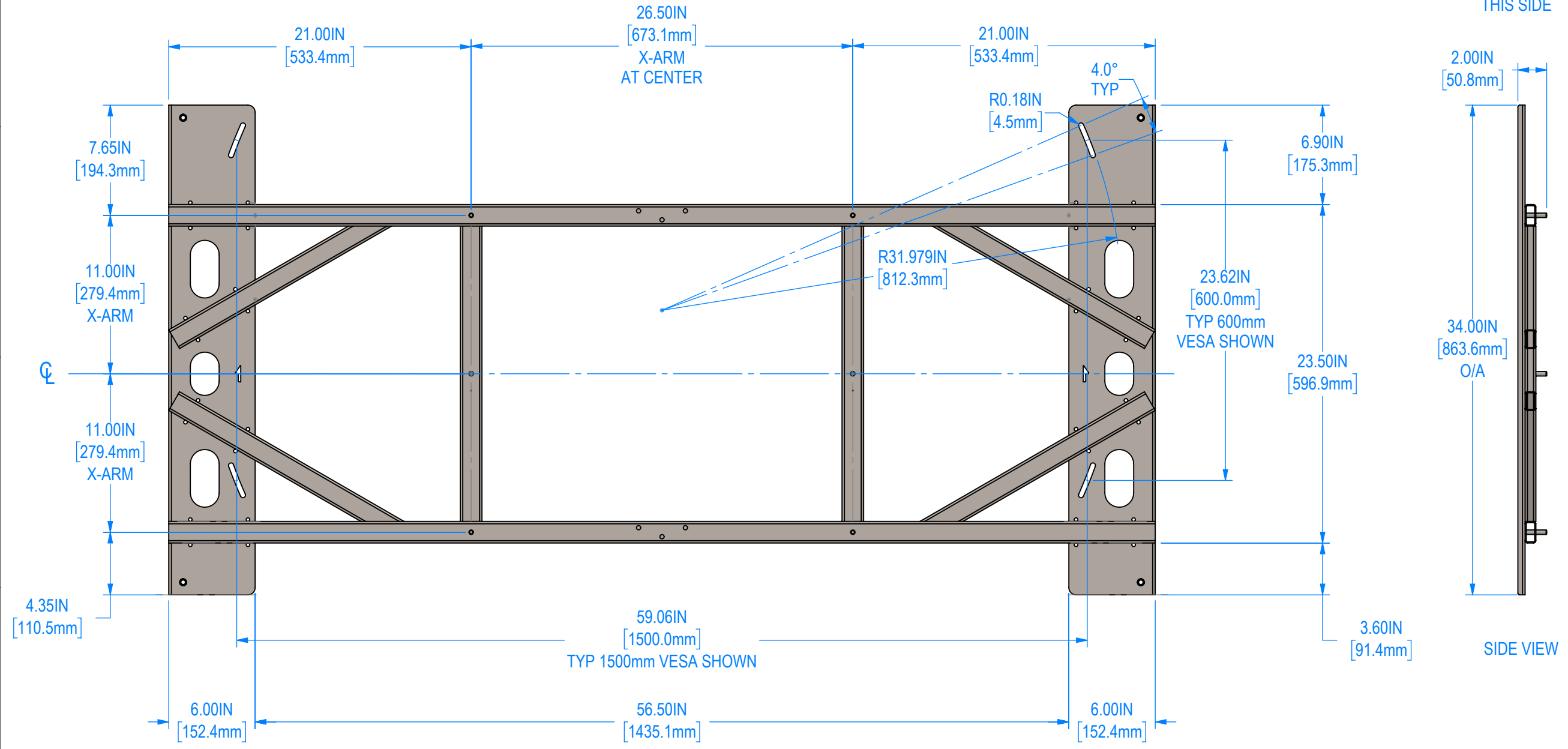
DATE:

NOTES:



TOP VIEW

THICKNESS VARIES GREATLY BY DISPLAY PLEASE CALL US FOR SPECIFIC DISPLAY INTERFACE DETAILS: 714-991-6400



REAR VIEW

DISPLAY THIS SIDE

SIDE VIEW

G			
F			
E			
C			
B			
A			
REV:	DESCRIPTION:	BY:	DATE:
DEALER:			

PROJECT:

SKU: RPWM-32MAXB6-OFFSET

PART NO: 00072-00101-10A

DESCRIPTION: TYPICAL OFFSET PLATE FOR WALLMATE 32MAXB6

SIZE: B DATE: 9/7/2023 DRAWN: GS CHECKED:

DWG. ID: RPWM-32MAXB6-XMR-OFFSET_4

JOB NO: SCALE: 1:8 SHEET: 4 OF 4 REVISION: A