

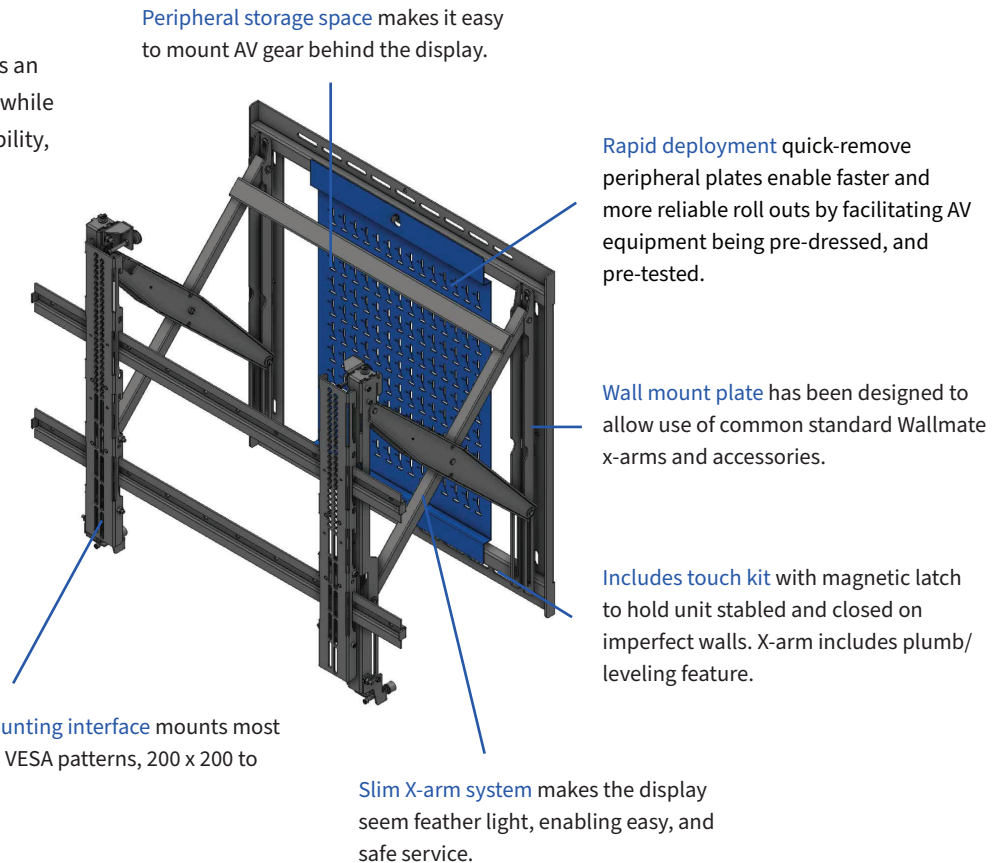
WALLMATE ON WALL X-ARM

On Wall Flat Panel Mounting System

FOR DISPLAYS UP TO 300 LBS

The Wallmate W32MAXB with Universal mount is an on wall system designed for flat panel displays, while maintaining the ultimate in display mount flexibility, and single person service.

- Manufactured with 11 to 14-gauge steel to create a rigid mount that will remain stable and level.
- Installation only requires simple tools such as a drill, screwdriver, and allen key.
- Mounts directly to wall surface.



Wallmate W32MAXB-XMS-UNV Product Specification

Min. Landscape or Portrait Panel Size	65"
Max Recommended Display Size Dia. 16:9	98"
Max display size dia. 21:9	90"
X-arm Opening Distance (wall to back of display)	19.55"
X-arm Closed Distance (wall to back of display)	4.86"
Horizontal Shift	+/-9.4" H ⁶
Vertical Shift	+5.02"/-9.09" V ⁶
Rotation of Display	0-6.5mm height adjust per VESA location
X-arm Plumb Alignment	-0.62° to 0°
Display Weight Capacity	300 lbs.
Internal Mount Space X-arm (WxHxD inches)	23.75" x 19.44" x 3.68"
Peripheral Plate Dims (WxHxD inches)	17.5" x 26.75" x 0.5"

Wall Plate Dims (WxHxD inches)	30" x 30" x 0.87"
Plate Attach Pattern to X-arm (WxH inches)	26.5" x 11"
Default VESA Pattern Width	200-800
Default VESA Pattern Height	200-600
Max Horizontal or Vertical	800 x 600
System Weight	71 lbs.

Wallmate W32MAXB-XMS-UNV Model Numbers

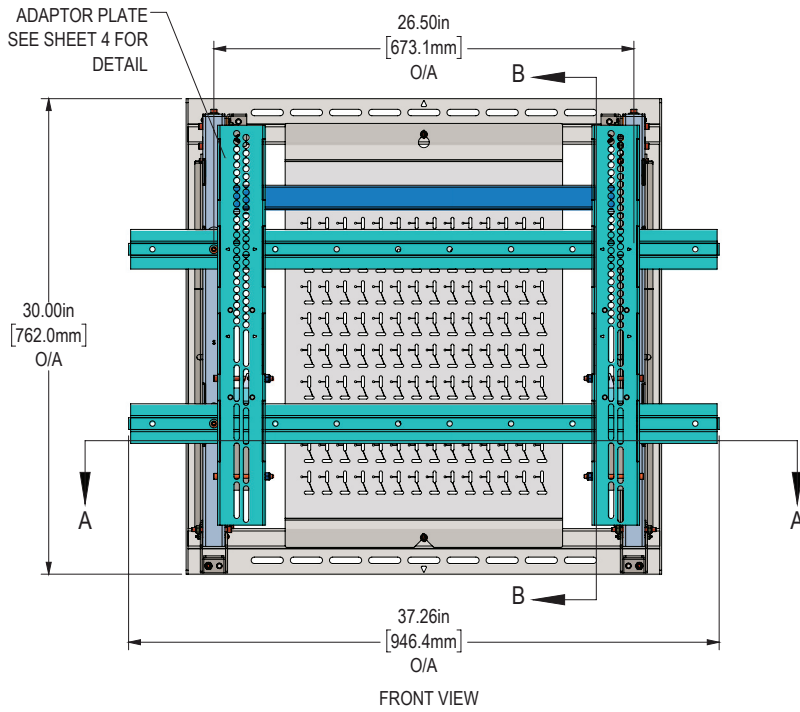
Wallmate RPWM-W32MAXB-XMS-UNV Kit with Universal Mounting Plate (as shown in images)

Part Number	Description	Typical Purchaser
RPWM-W32MAXB-XMS-UNV	Surface mounted 32MAXB series system for 300 lbs. displays. Includes wall attach bracket, peripheral mount plate, Slim x-arm, touch kit, and Universal display mount.	Integrator

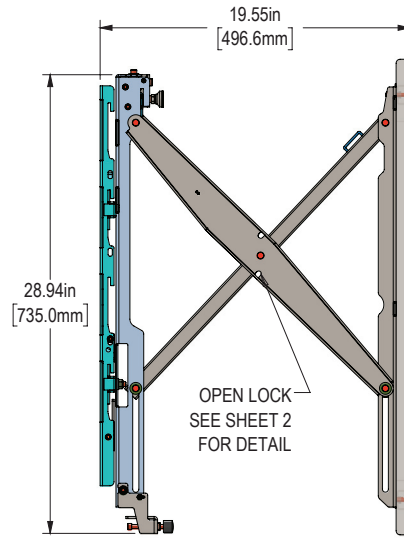
Additional Wallmate W32MAXB Accessories and Kits

Part Number	Description
RPWM-UNV-64	Universal mount assembly
RPWM-32B-FLIP	FLIP up addition for Wallmate 32/32MAX series - Holds an offset plate or unv mount
RPWM-32MAXB-PM	Peripheral device mounting plate for Wallmate 32MAXBF and BS Series
RPWM-32MAXBF-PM2	Dual layer peripheral device mounting plate for Wallmate 32MAXBF
RPWM-32MAXBF-PMFLX-1	Peripheral device mounting plate, Wallmate 32MAXBF for Crestron Flex systems
RPWM-32MAXBF-PMFLX2-1	Dual layer peripheral device mounting plate, Wallmate 32MAXBF for Crestron Flex systems
RPWM-LOCK-S	Wallmate Slim x-arm lock Kit
RPWM-TOUCH-S	Wallmate Slim x-arm touch kit
RPWM-TILT	Wallmate B tilt brackets
RPWM-SPCR-(S, M, L or OFFSET)	Pair of spacers for Wallmate x-arms (small, medium, large, or custom)
RPWM-UNV64-C#	VESA converter
RPWM-UC-SPK-(A, B, or L/R)	Wallmate (above, below, or left/right) display loudspeaker mount kit for Universal mount
RPWM-UC-UNVS-KCAM	Universal mount camera kit. Call for matching number.
Kits	Description
RPWM-W32MAXB-XMS-OFFSET	Wallmate 32MAXB Surface mount system with offset plate

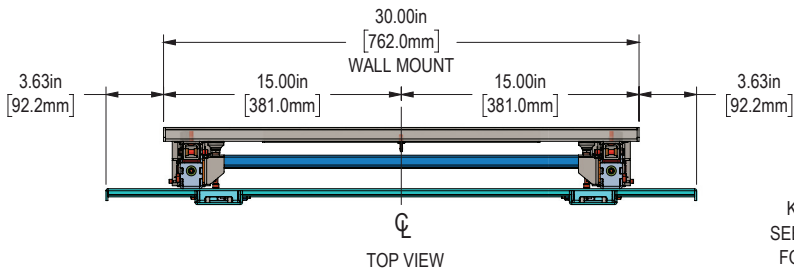
FRONT VIEW



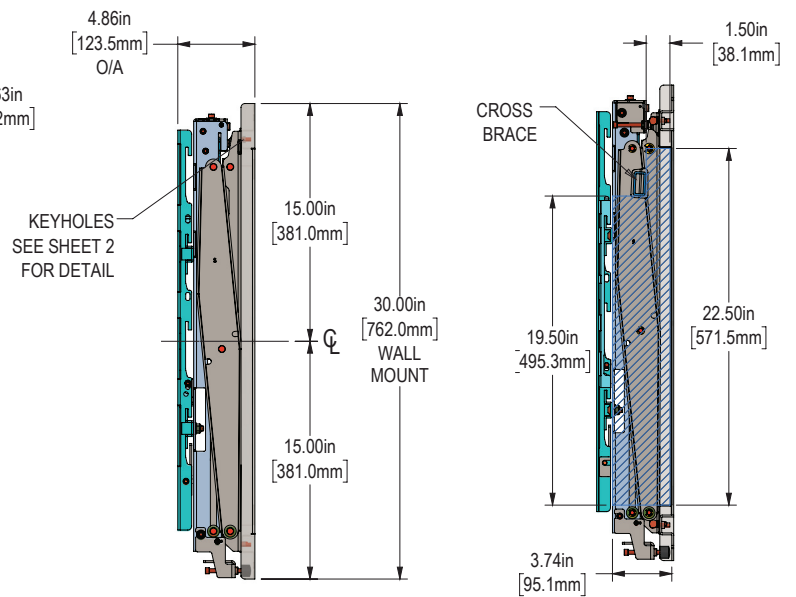
SIDE VIEW (X-ARMS OPEN)



TOP VIEW



SIDE VIEW (X-ARMS CLOSED)



*6: Shift range based on 600mmW x 400mmH hole pattern.
For UNVM based on 300mmW x 300mmH holes pattern.
For UNV-158 based on 900mmW x 600mmH holes pattern.

CONTACT US

rpvisuals.com/wallmate
info@rpvisuals.com
(714) 991-6400

