

This drawing contains proprietary information owned or controlled by RPVisual Solutions and must not be used or disclosed without prior written authorization

DIMENSIONS ARE IN INCHES
TOLERANCES ARE:
FRACTIONS: X/X : ± 1/32
DECIMALS: .XX : ± .03
 .XXX : ± .010
ANGLES: X : ± .5
 .XX : ± .20

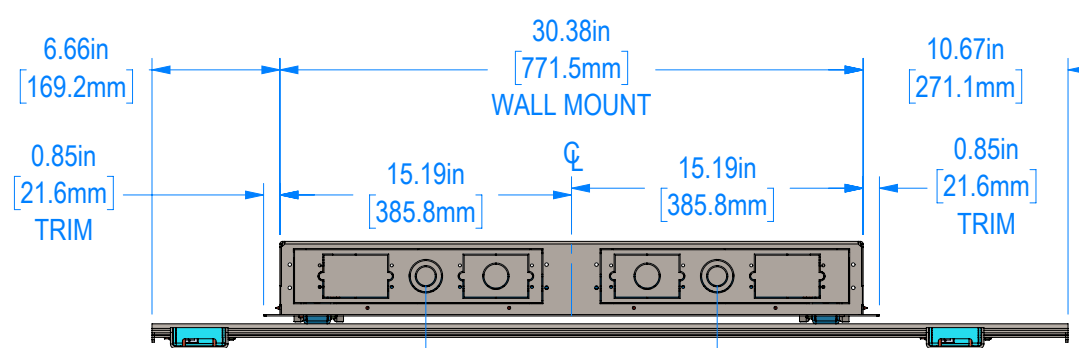
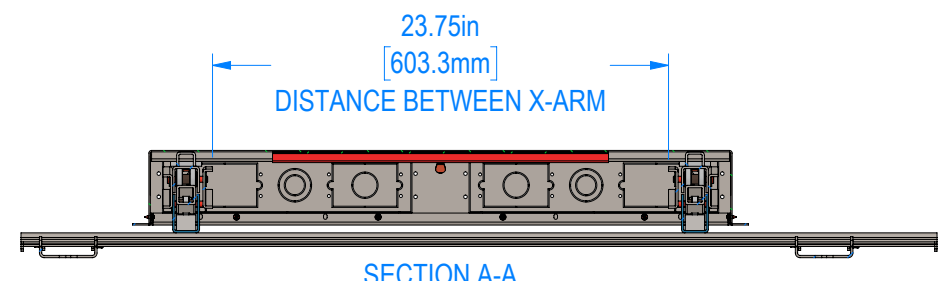
APPROVED FOR FABRICATION

SIGNATURE: _____

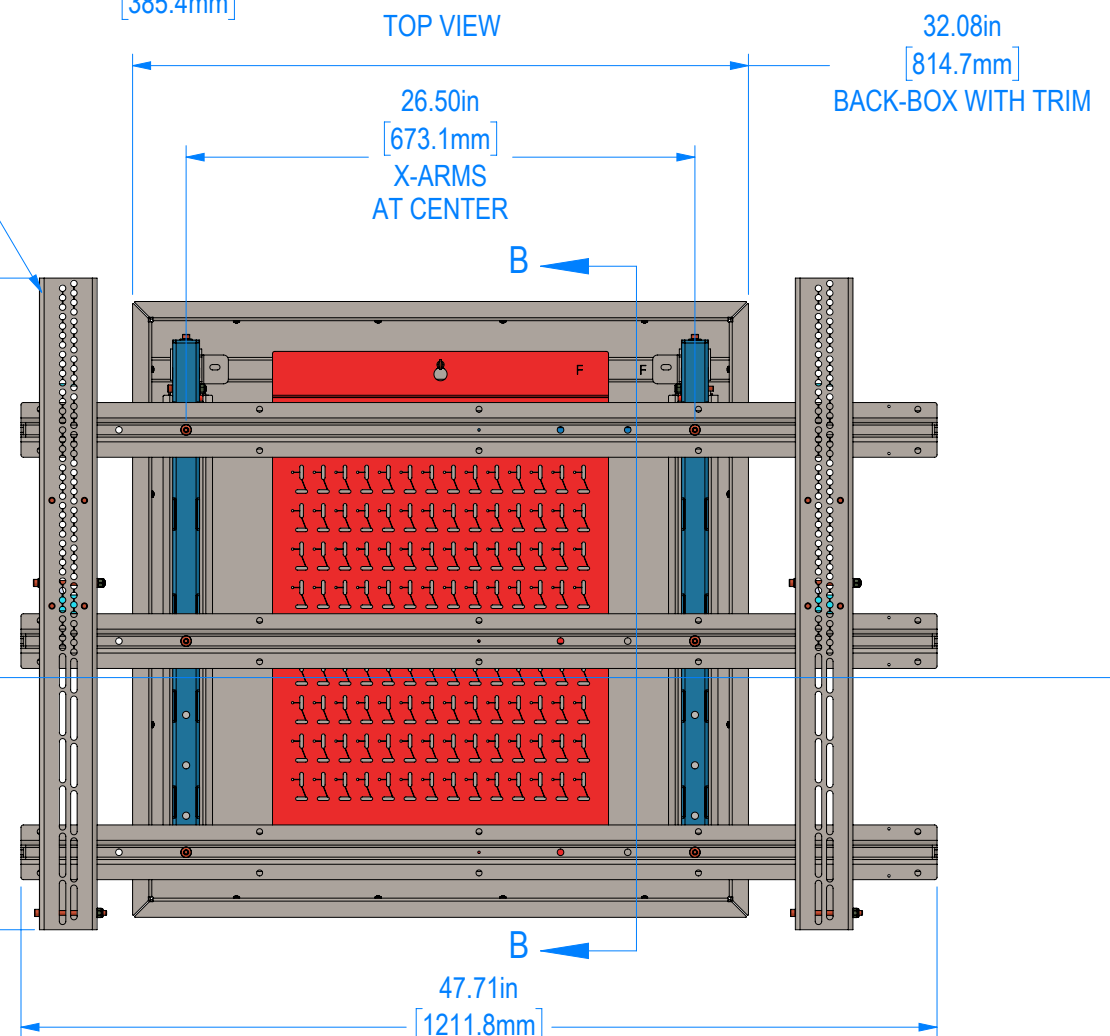
DATE: _____

NOTES:

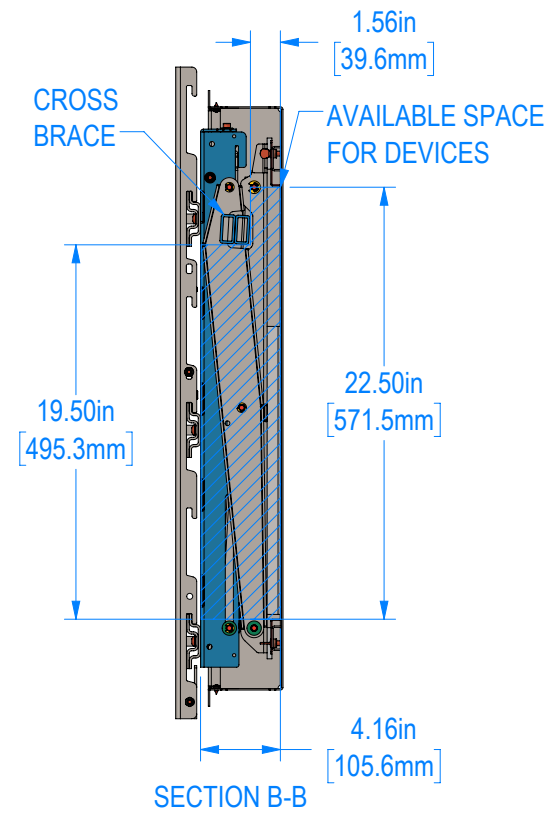
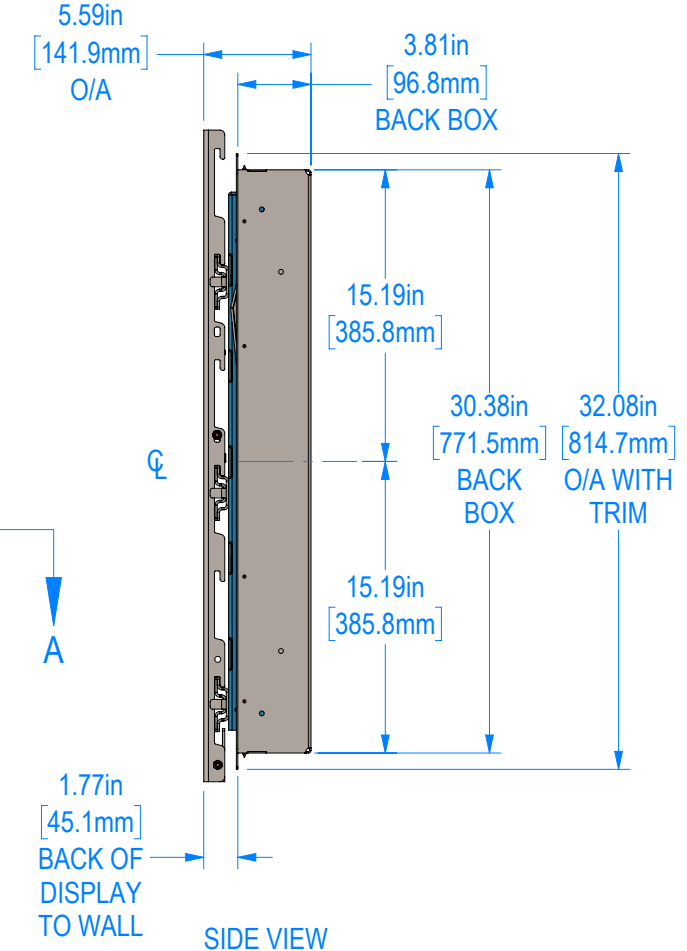
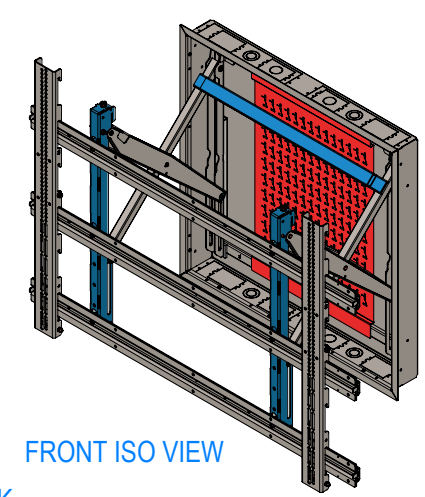
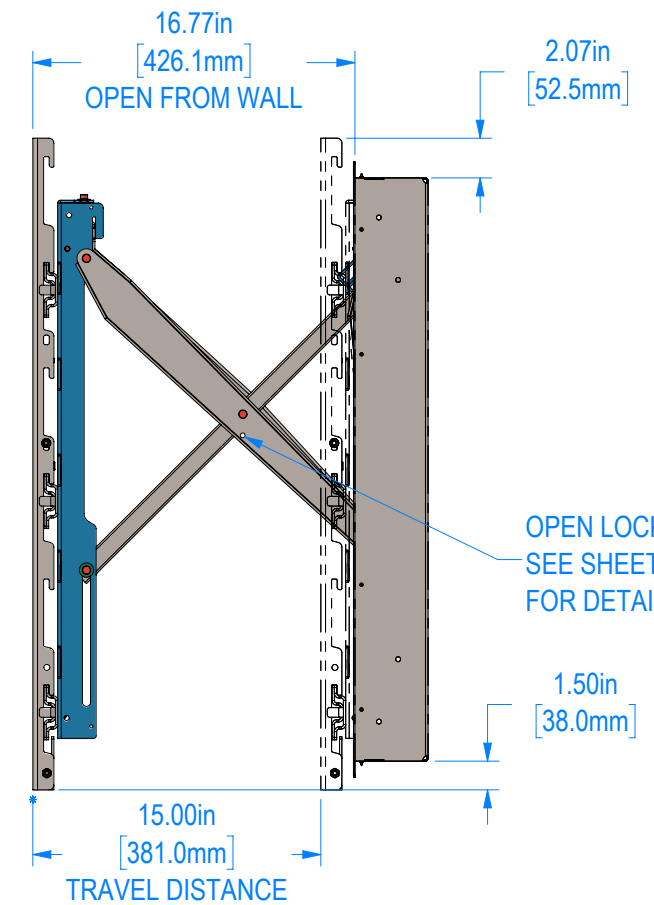
1. FINISH: SEMI-GLOSS BLACK POWDER COAT
2. APPROXIMATE WEIGHT: 129 LBS



UNV-106 ADAPTER
SEE SHEET 4 & 5 FOR
DETAIL



- NOTES:
1. MAX DISPLAY WEIGHT LOAD 350 LBS (158 KG)
 2. VESA WIDTH: MIN: 300W, MAX 1000W
 3. VESA HEIGHT: MIN: 200H, MAX 800H



G			
F			
E			
C			
B			
A			
REV:	DESCRIPTION:	BY:	DATE:
DEALER:			

PROJECT: _____

SKU: RPWM-32MAXBF-XMR-UNV-106

PART NO: 0003-220-00

DESCRIPTION: Universal Mount - Pull Out
Wallmate 32MAXBF kit

SIZE: B DATE: 04/13/2026 DRAWN: CAN CHECKED: XX

DWG. ID: RPWM-32MAXBF-XMR-UNV-106.1

JOB NO: _____ SCALE: 1:10 SHEET: 1 OF 6 REVISION: _____

This drawing contains proprietary information owned or controlled by RPVisual Solutions and must not be used or disclosed without prior written authorization

DIMENSIONS ARE IN INCHES
TOLERANCES ARE:
FRACTIONS DECIMALS ANGLES
X/X : ± 1/32 .XX : ± .03 .X : ± .5
.XXX : ± .010 .XX : ± .20

APPROVED FOR FABRICATION

SIGNATURE: _____

DATE: _____

NOTES:
1. FINISH: SEMI-GLOSS BLACK POWDER COAT
2. APPROXIMATE WEIGHT: 129 LBS

G			
F			
E			
C			
B			
A			
REV:	DESCRIPTION:	BY:	DATE:

DEALER: _____

PROJECT: _____

SKU: RPWM-32MAXBF-XMR-UNV-106

PART NO: 0003-220-00

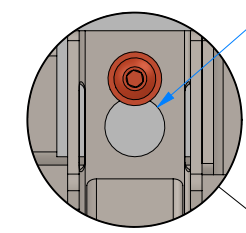
DESCRIPTION:
Universal Mount - Pull Out
Wallmate 32MAXBF kit

SIZE: B	DATE: 04/13/2026	DRAWN: CAN	CHECKED: XX
---------	------------------	------------	-------------

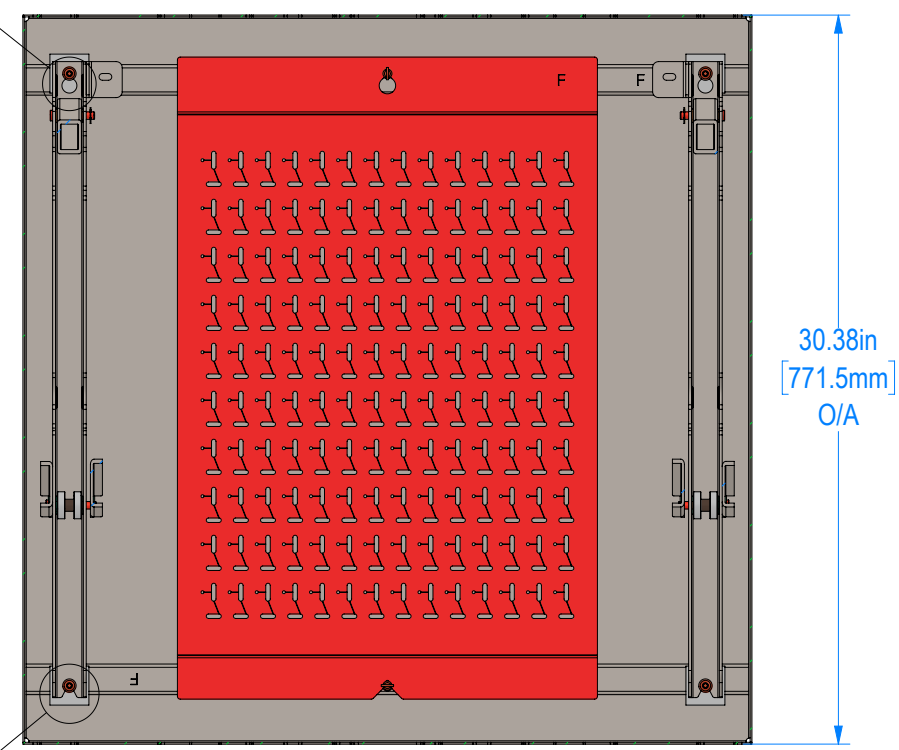
DWG. ID: RPWM-32MAXBF-XMR-UNV-106.2

JOB NO:	SCALE: 1:8	REVISION:
	SHEET: 2 OF 6	

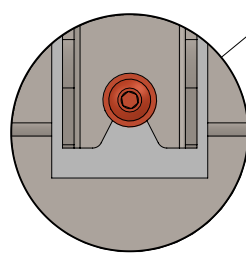
Ø 0.63in
[15.9mm]
KEYHOLE
X2, UPPER X-ARM



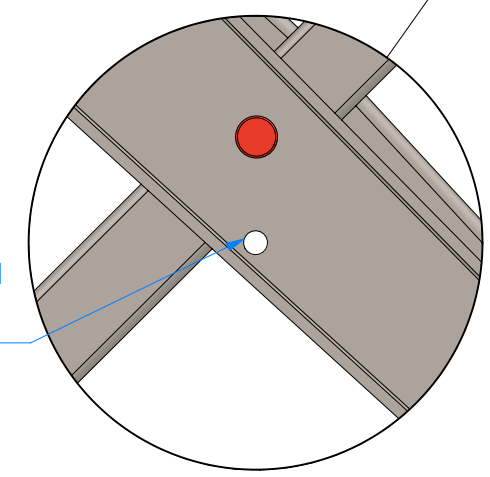
DETAIL D
SCALE 1 : 2



SECTION C-C

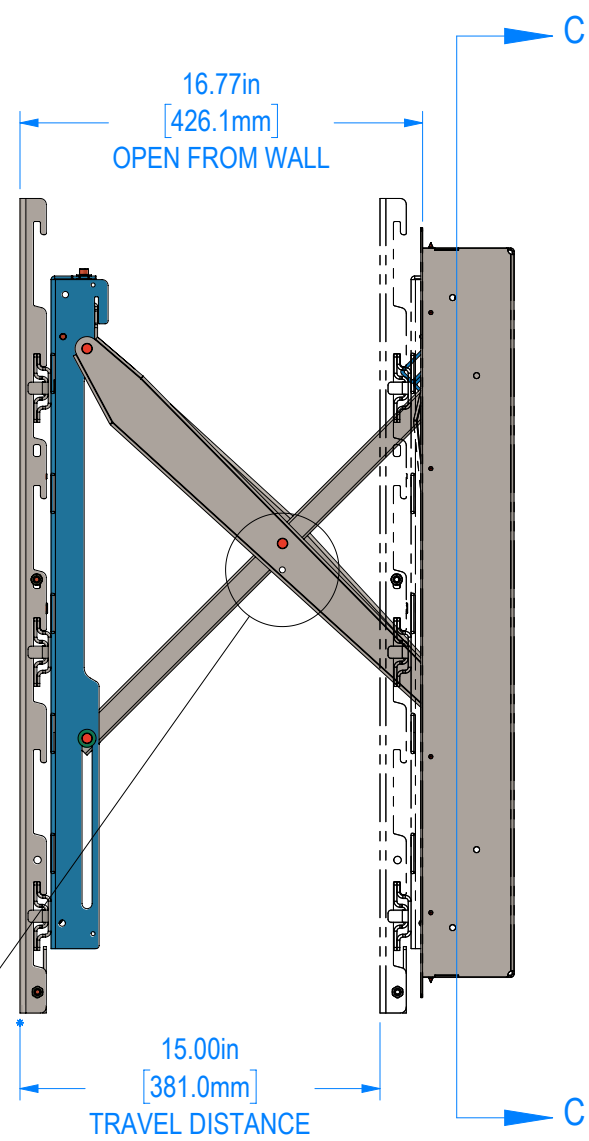


DETAIL E
SCALE 1 : 2



DETAIL F
SCALE 1 : 2

USE THIS LOCATION
TO LOCK X-ARM
IN OPEN POSITION



This drawing contains proprietary information owned or controlled by RPVisual Solutions and must not be used or disclosed without prior written authorization

DIMENSIONS ARE IN INCHES
TOLERANCES ARE:

FRACTIONS	DECIMALS	ANGLES
X/X : ± 1/32	.XX : ± .03 .XXX : ± .010	.X : ± .5 .XX : ± .20

APPROVED FOR FABRICATION

SIGNATURE: _____

DATE: _____

NOTES:

1. FINISH: SEMI-GLOSS BLACK POWDER COAT
2. APPROXIMATE WEIGHT: 129 LBS

G			
F			
E			
C			
B			
A			

REV: DESCRIPTION: BY: DATE:

DEALER: _____

PROJECT: _____

SKU: RPWM-32MAXBF-XMR-UNV-106

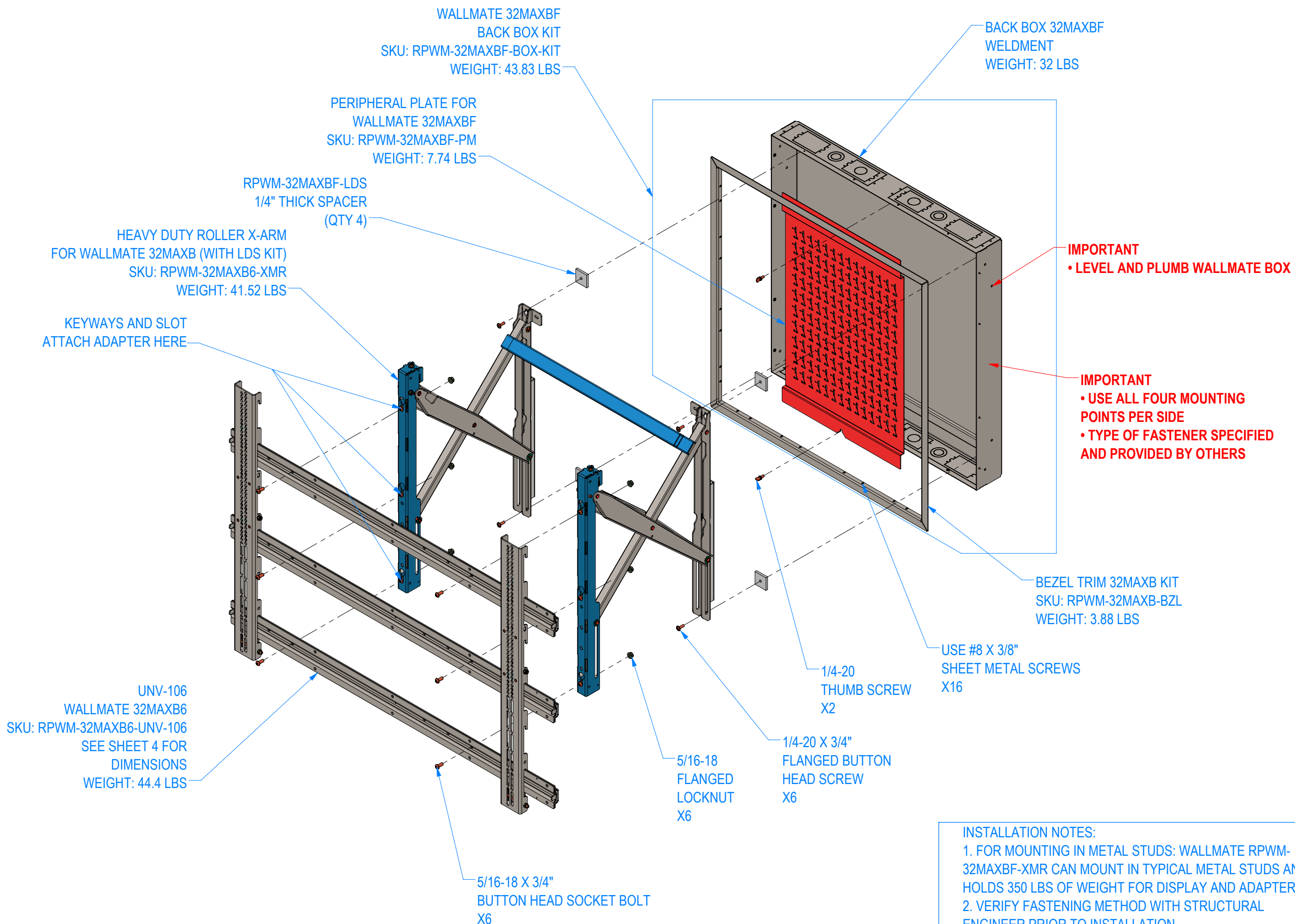
PART NO: 0003-220-00

DESCRIPTION: Universal Mount - Pull Out
Wallmate 32MAXBF kit

SIZE: B	DATE: 04/13/2026	DRAWN: CAN	CHECKED: XX
---------	------------------	------------	-------------

DWG. ID: RPWM-32MAXBF-XMR-UNV-106.3

JOB NO:	SCALE: 1:10	REVISION:
	SHEET: 3 OF 6	



IMPORTANT
• LEVEL AND PLUMB WALLMATE BOX

IMPORTANT
• USE ALL FOUR MOUNTING POINTS PER SIDE
• TYPE OF FASTENER SPECIFIED AND PROVIDED BY OTHERS

INSTALLATION NOTES:
1. FOR MOUNTING IN METAL STUDS: WALLMATE RPWM-32MAXBF-XMR CAN MOUNT IN TYPICAL METAL STUDS AND HOLDS 350 LBS OF WEIGHT FOR DISPLAY AND ADAPTER
2. VERIFY FASTENING METHOD WITH STRUCTURAL ENGINEER PRIOR TO INSTALLATION
3. VERIFY WALL STRENGTH WITH STRUCTURAL ENGINEER. (COG DRAWINGS AVAILABLE UPON REQUEST.)
4. USE ALL FASTENING POINTS ON BOTH SIDES OF BOX

NOTE TO CONTRACTOR:
 USE SUPPLIED HARDWARE WITH CAUTION:
 - SCREWS CAN EXCEED DISPLAY INSERT LENGTH
 - VERIFY INSERT LENGTH WITH DISPLAY
 MANUFACTURER PRIOR TO USE

DISPLAY MOUNTING HARDWARE PROVIDED BY RPV:
 QTY: 4 / UNIT - M6 X 16mm FLANGED SBHCS ALLOY
 QTY: 4 / UNIT - M8 X 16mm, M8 X 20mm FLANGED SBHCS ALLOY
 QTY: 4 / UNIT - M8 X 40mm SBHCS ALLOY
 QTY: 4 / UNIT - 5/16" ID X 3/4" OD FLAT WASHER

This drawing contains proprietary information owned or controlled by RPVisual Solutions and must not be used or disclosed without prior written authorization

DIMENSIONS ARE IN INCHES
 TOLERANCES ARE:
 FRACTIONS DECIMALS ANGLES
 X/X : ± 1/32 .XX : ± .03 .X : ± .5
 .XXX : ± .010 .XX : ± .20

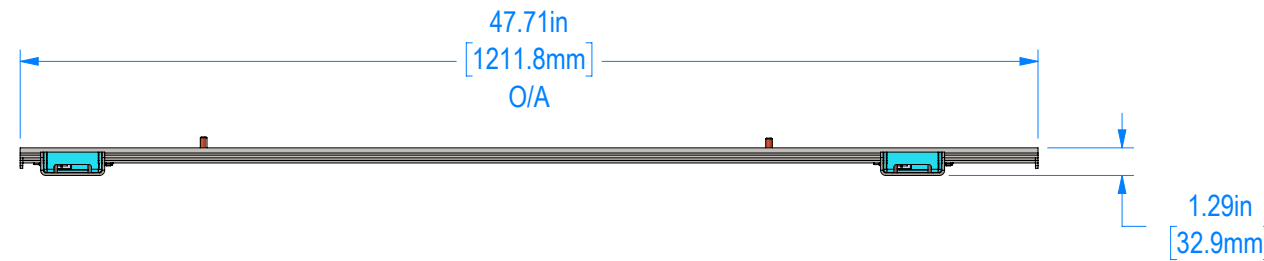
APPROVED FOR FABRICATION

SIGNATURE:

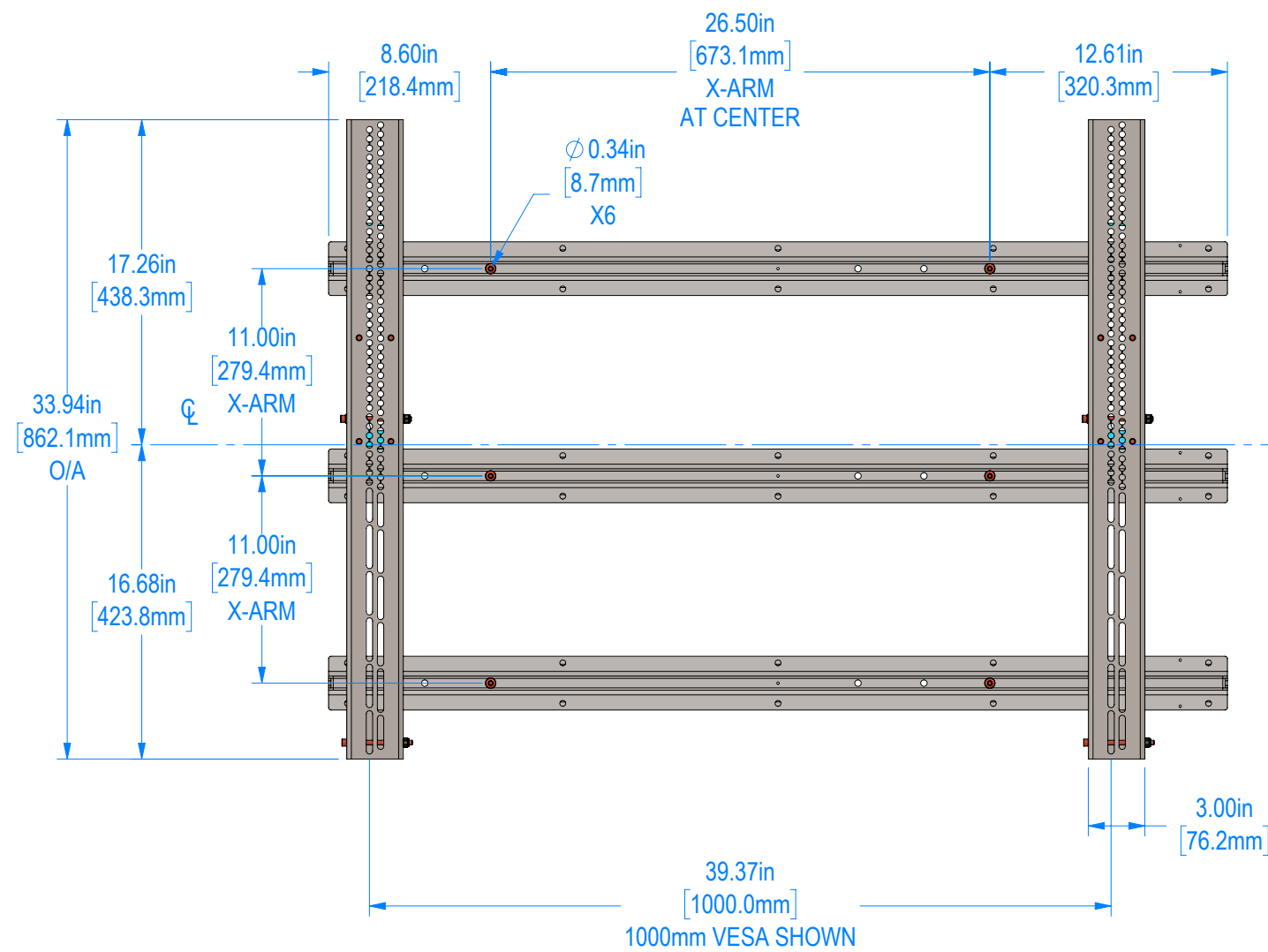
DATE:

NOTES:

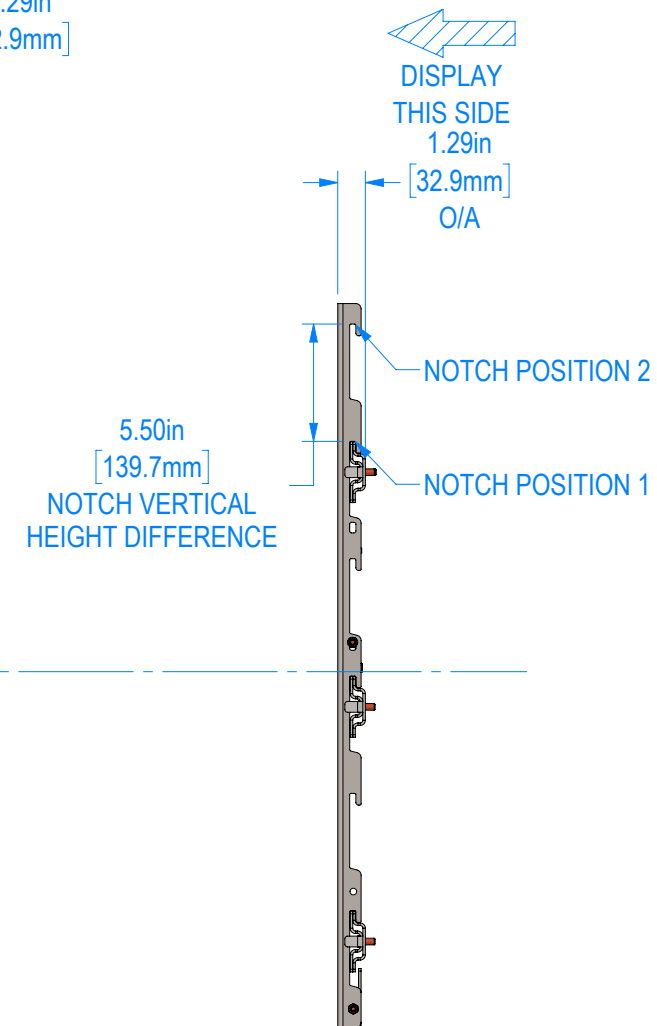
1. FINISH: SEMI-GLOSS BLACK POWDER COAT
2. APPROXIMATE WEIGHT: 44 LBS



TOP VIEW



FRONT VIEW



SIDE VIEW

NOTE:
 NOTCH POSITION 1 SHOWN, SEE SHEET 5 FOR NOTCH POSITION 2

G			
F			
E			
C			
B			
A			

REV: DESCRIPTION: BY: DATE:

DEALER:

PROJECT:

SKU: RPWM-XMR-UNV-106

PART NO: 00084-001_01-00A

DESCRIPTION:
 Wallmate B6-XMR-UNV-106
 Universal Mount

SIZE: B	DATE: 04/13/2026	DRAWN: CAN	CHECKED: XX
---------	------------------	------------	-------------

DWG. ID: RPWM-32MAXBF-XMR-UNV-106.4

JOB NO:	SCALE: 1:9	REVISION: A
	SHEET: 4 OF 6	

NOTE TO CONTRACTOR:
 USE SUPPLIED HARDWARE WITH CAUTION:
 - SCREWS CAN EXCEED DISPLAY INSERT LENGTH
 - VERIFY INSERT LENGTH WITH DISPLAY
 MANUFACTURER PRIOR TO USE

DISPLAY MOUNTING HARDWARE PROVIDED BY RPV:
 QTY: 4 / UNIT - M6 X 16mm FLANGED SBHCS ALLOY
 QTY: 4 / UNIT - M8 X 16mm, M8 X 20mm FLANGED SBHCS ALLOY
 QTY: 4 / UNIT - M8 X 40mm SBHCS ALLOY
 QTY: 4 / UNIT - 5/16" ID X 3/4" OD FLAT WASHER

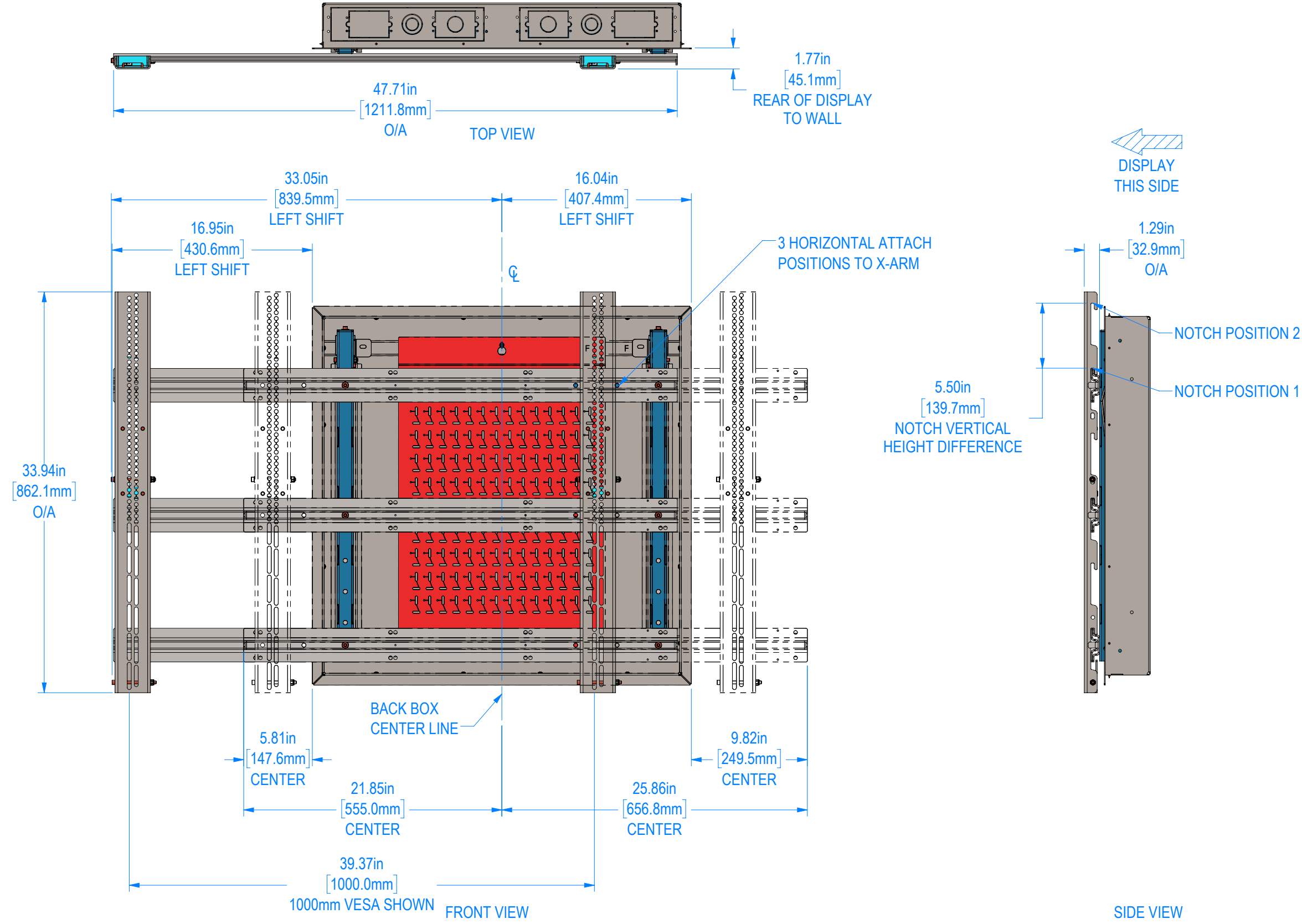
This drawing contains proprietary information owned or controlled by RPVisual Solutions and must not be used or disclosed without prior written authorization

DIMENSIONS ARE IN INCHES
 TOLERANCES ARE:
 FRACTIONS DECIMALS ANGLES
 X/X : ± 1/32 .XX : ± .03 .X : ± .5
 .XXX : ± .010 .XX : ± .20

APPROVED FOR FABRICATION
 SIGNATURE:

DATE:

NOTES:
 1. FINISH: SEMI-GLOSS BLACK POWDER COAT
 2. APPROXIMATE WEIGHT: 129 LBS



NOTE:
 SHIFT CAN GO LEFT OR RIGHT

G			
F			
E			
C			
B			
A			
REV:	DESCRIPTION:	BY:	DATE:
DEALER:			
PROJECT:			
SKU: RPWM-32MAXBF-XMR-UNV-106			
PART NO: 0003-220-00			
DESCRIPTION: Universal Mount - Pull Out Wallmate 32MAXBF kit			
SIZE: B	DATE: 04/13/2026	DRAWN: CAN	CHECKED: XX
DWG. ID: RPWM-32MAXBF-XMR-UNV-106.6			
JOB NO:	SCALE: 1:9	REVISION:	
	SHEET: 6 OF 6		